

NOLArealtor.com

Your Guide to New Orleans Homes & Condos


LATTER & BLUM
 Since 1916 INCORPORATED
 ERA Powered, Independently Owned & Operated

JOHN SCHAFF CRS

More than just a Realtor!

(c) 504.343.6683

(o) 504.895.4663


610 John Churchill Chase #6L
\$629,000

Priced to sell custom renov. Ultra-luxe! Generous rms, open plan, tons of light, gleaming wd flrs, kit w/Carrera Marble Island & top-of-the-line SS appls, modern master BA w/oversized tub/sep shower. Lg in-unit Indry. Fabulous views from the rooftop deck. Assigned garage prkg & pet-friendly bldg.


1025 LEONTINE ST.
\$289,900

Super cute condo in a fantastic Uptown neighborhood. One block off of Jefferson and just steps to all that Magazine Street has to offer! 2BR/1BA


3620 TOLMAS DR.
\$525,000

Elegant reno in great Metairie location! 3BD / 3 BA Mid-Century modern style home features an open floor plan, Zen-like solarium, huge gourmet kitchen w/top-of-the-line appliances. Lg Master Suite. Inground pool, lushly landscaped oversized lot + 2 car garage.


760 MAGAZINE ST
#214 • \$355,000

Rooftop Terrace!
 Fantastic Location in the Heart of the Warehouse District! 1BR/1.5BA

MAGNIFICENT HOME ON DOUBLE LOT!

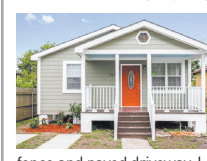
HISTORIC 7TH WARD RENOVATION!

1023 WASHINGTON AVE.



NEW PRICE
 ELEGANT 1876 ITALIANATE SIDE-HALL on a double lot in the Channel! 4 BR/3 BA, 3859 sq ft. Original architectural designs galore, inc. double and triple crown molding, Heart of Pine floors, 13' ceilings, exposed brick, wainscoting, walk-thru windows, many fireplaces, inc. gorgeous marble mantels, double parlors w/ pocket doors, cypress doors, pretty chandeliers, large rooms, tons of light w/ open feel. Expansive galleries w/ original wrought iron overlooking large landscaped side lot. Off-st parking. **\$975,000**

2520 TOURO ST.



Spacious 3BR/2 Full BA, w/huge Master. Open concept kitchen with ALL NEW stainless steel appliances. Granite counters in kit and baths. Laundry room w/storage. New central A/C, new wood fence and paved driveway. Large front & back yards. Close proximity to Elysian Fields, I-10, I-610 provides easy access to downtown, hospitals & University Medical Center. Don't miss this one! **\$199,000**

LATTER & BLUM
 Since 1916 INCORPORATED

TOP PRODUCER GARDEN DISTRICT OFFICE 2016



(504) 895-4663

Latter & Blum, ERA powered is independently owned and operated.

MICHAEL ZAROU

ABR, CRS, GRI, SFR, SRS

CELL: (504) 913-2872

EMAIL: mzarou@latterblum.com



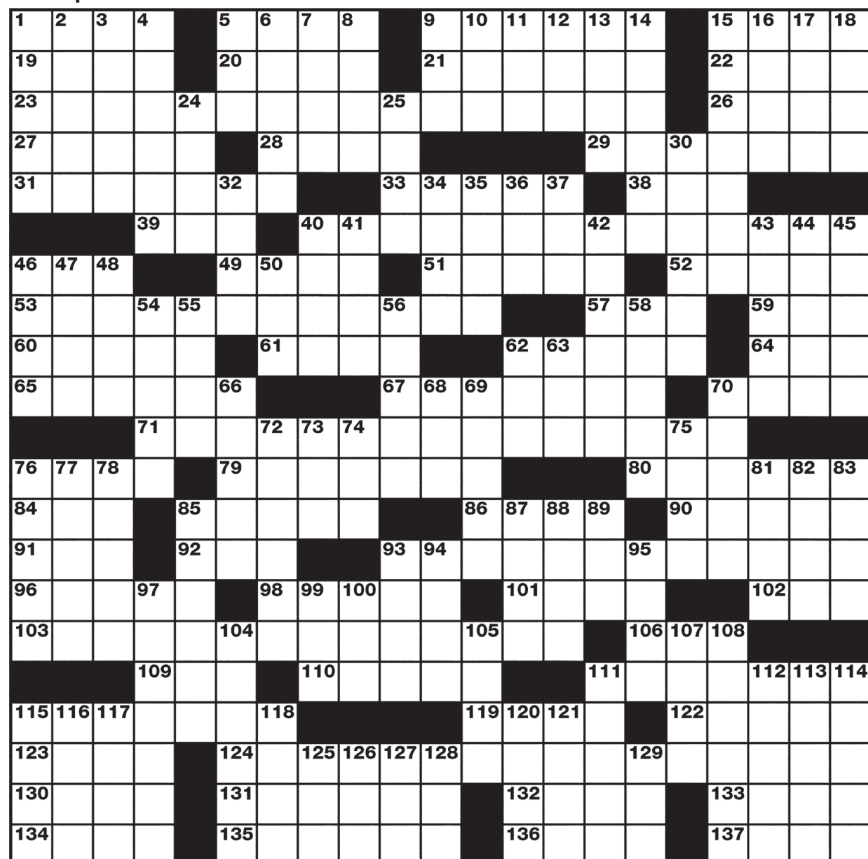
THE NEWSDAY CROSSWORD

Edited by Stanley Newman (www.StanXwords.com)

NURSERY NEWS: Page one headlines by Greg Johnson

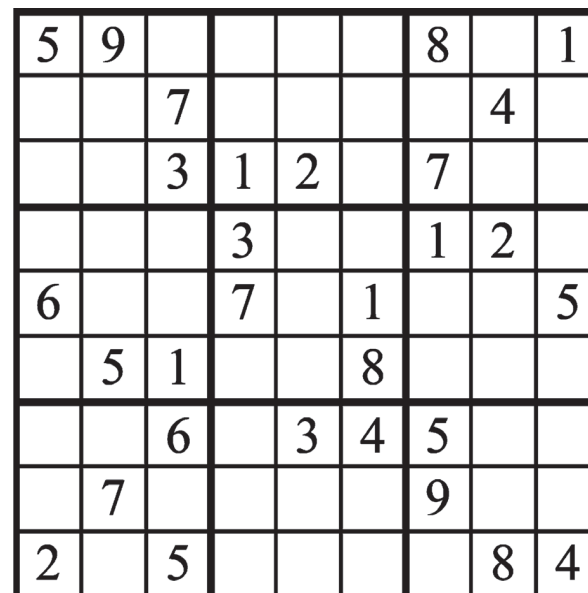
ACROSS

- 1 Not of the clergy
 5 Gear teeth
 9 Sweat spot
 15 Flapjack chain
 19 Taj Mahal city
 20 Excellent, slangily
 21 Take too far
 22 Takeout order
 23 WOOL SHORTAGE
 "SHEAR" NONSENSE
 26 Auction exclamation
 27 Agree to take part
 28 Solemn vow
 29 Golfer's count
 31 Space shot finale
- 33 Agassi of tennis
 38 Poetic dusk
 39 Neptune's domain
 40 EEK! FARM FIASCO
 46 Bake sale grp.
 49 Feel concern
 51 Emulate bloodhounds
 52 Floor models
 53 CASTLE HASSLE
 CASE CRACKED
 57 Sesame Street rating
 59 Nova aier
 60 Opposite of ultra-
 61 Rock plateau
 62 Lake near Reno
 64 Timeline slice
- 65 Actress Hedy
 67 Stoical
 70 Sculpting medium
 71 "SANDMAN" TALK
 OF TOWN
 76 Electronic read
 79 Rodeo composer
 80 100% behind
 84 Aladdin prince
 85 "Poison" plant
 86 Fails to be
 90 Sealy alternative
 91 "Modern" prefix
 92 Poetic planet
 93 LULLABY TAKES
 A BOUGH



- 96 Insurer with a duck
 98 "Farewell, François"
 101 Genesis twin
 102 Destroyer letters
 103 LOVE LETTER LOST
 AND FOUND
 106 HMO participants
 109 Cartoon frame
 110 River formation
 111 Bills for drinks
 115 Friendly touch
 119 Academic period
 122 Crisp snack
 123 Amenable
 124 ANCIENT BREAK-
 FAST DISCOVERED
 130 Sudden attack
 131 Take long steps
 132 Melon cover
 133 Luau figurine
 134 Right-angle shapes
 135 Really enjoys
 136 Mentions
 137 Idyllic spot
- 44 Jungle Book snake
 45 Opinion piece
 46 Golfer Mickelson
 47 Sushi selection
 48 Two-band, as radios
 50 USN bigwig
 54 Shrimp cousin
 55 Scale deduction
 56 Singer Abdul
 58 Russian drink
 62 Pull from behind
 63 Bird: Pref.
 66 Happen again
 68 French diarist
 69 Battlefield healer
 70 A-lister
 72 Bearlike marsupial
 73 Brewpub letters
 74 Inc.'s cousin
 75 German Elizabeth
 76 Yemen's capital
 77 Chindentation?
 78 Garlicky mayonnaise
 81 Munich Mrs.
 82 Wagering spots: Abbr.
 83 Sunbeams
 85 Bulb holder
 87 ___Ball (arcade game)
- 88 GOP elephant creator
 89 Itinerary abbr.
 93 On the level
 94 Unseat
 95 Arizona city
 97 Gains altitude
 99 Family nickname
 100 Ore ending
 104 Pass by
 105 Bout ender
 107 Bummer
 108 Tampa neighbor
 111 Like the ocean
 112 Garden pest
 113 British guy
 114 Take effect
 115 Folk wisdom
 116 Whitish gem
 117 Conceal
 118 Anti-leather org.
 120 Gets it wrong
 121 Operatic excerpt
 125 Sculptures, e.g.
 126 Family nickname
 127 www.tulane.____
 128 Lively energy
 129 Driller's deg.
- DOWN
- 1 Toil away
 2 Open-mouthed
 3 Hopping mad
 4 Cruise quarters
 5 Tax prep pro
 6 Cry of delight
 7 Charity event
 8 Datum
 9 NASA affirmative
 10 Campers, for short
 11 Verbal shrug
 12 Post- opposite
 13 Mid-March day
 14 List of the best
 15 "My treat"
 16 Ensnare
 17 Stare at
 18 Pea holders
 24 Initial chip
 25 Blacken on a grill
 30 Maraschino
 covering
 32 Somewhat
 improper
 34 Cozy place
 35 Declare untrue
 36 MLB number
 37 Little toymaker
 40 On the level
 41 Skirt edges
 42 Statement in logic
 43 Drive forward

SUDOKU By Creators Syndicate


 CREATORS SYNDICATE © 2017 STANLEY NEWMAN
 Reach Stan Newman at P.O. Box 69, Massapequa Park, NY 11762 or www.StanXwords.com

ANSWERS FOR LAST WEEK: P 47